

## exocad<sup>®</sup> DentalCAD

exocad DentalCAD is an advanced CAD system for dental applications. From work flow management to CAD construction and preparation of production, exocad Dental CAD provides an integrated solution for dental technicians. exocad's multi-touch user interface sets new standards in interactive 3d modeling.

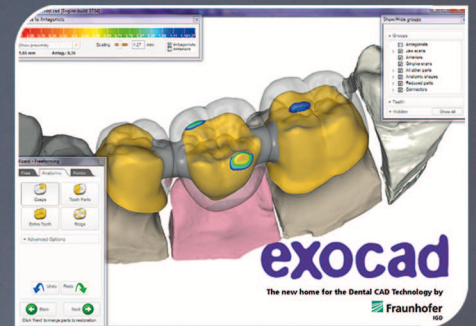
### Wide range of indications

Already in its base version, the exocad software covers a wide variety of indications, making it an attractive choice both for expert users and newcomers in the Dental CAD field:

- anatomic crowns, copings and offset copings
- bridge frameworks, inlays, onlays and veneers
- waxup digital copy milling and waxup-based frameworks
- primary telescopes

### Implant module

exocad's Implant Module is available as an add-on for our Dental CAD platform. With this module, custom abutments and screw-retained bridges can be constructed. exocad Dental CAD already includes several implant libraries. This includes the nt-trading library, which provides support for a variety of implant systems using nt-trading's titanium bases, and the Zfx library, for milling one-part abutments or screw retained bridges. Custom abutment design with exocad's implant module is easy and straight-forward.



### Screw retained bridges

With exocad's implant module, the design of screw retained bridges, crowns, and copings becomes an easy task. Take advantage of our advanced screw channel design, to simplify subsequent ceramic coating and minimize risk of chipping.

### Virtual articulator module

is an add-on for exocad Dental CAD, which allows users to consider dynamic occlusion when designing crowns and bridges. The positioning of the stone models within the physical articulator can be precisely transferred into the software for perfect patient specific results. Parameters such as condylar angle, bennet angle, immediate side shift, can be adjusted just like on a physical articulator.